

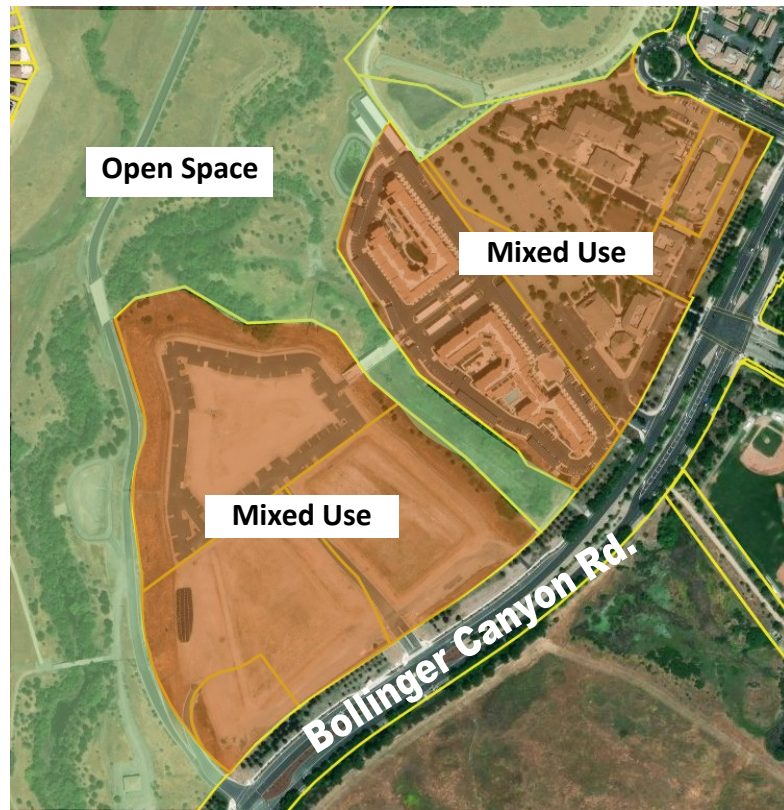
**Proposed General Plan 2040 Land Use and Zoning Map Exhibits
with Errata Changes**

August 1, 2023, 2023

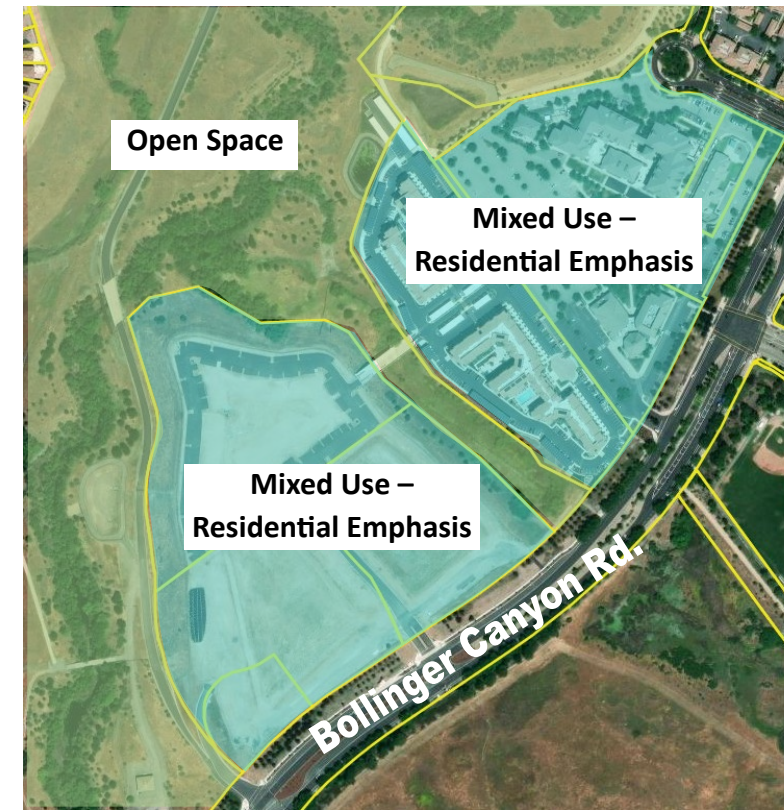
Dougherty Valley Mixed Use Site

(APNs: 222-270-047; 222-270-058; 222-270-059; 222-270-060; 222-270-061; 223-100-063; 223-100-064; 223-100-065; 223-100-066; 223-100-039)

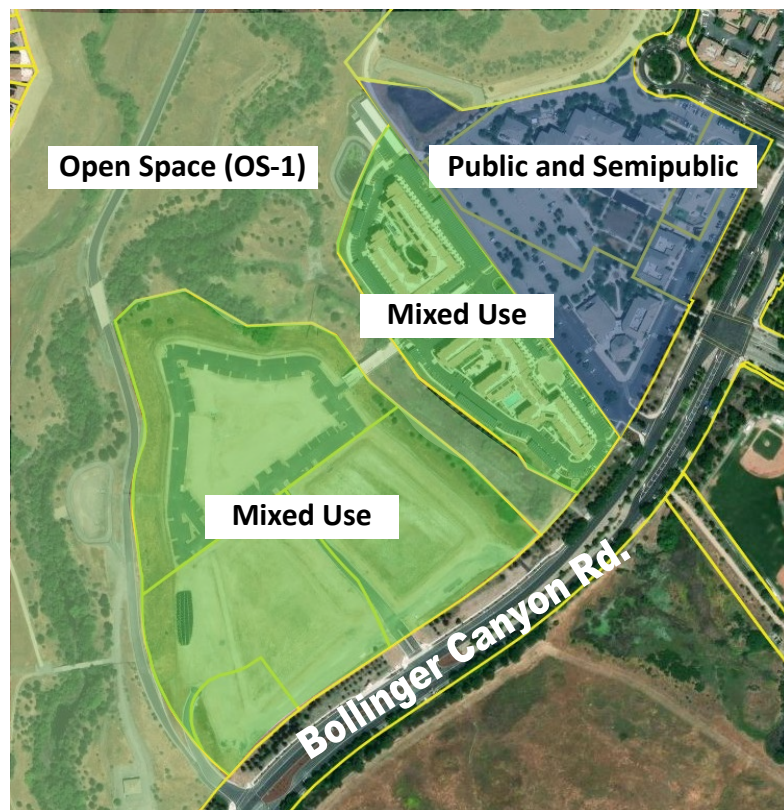
General Plan Land Use – Existing



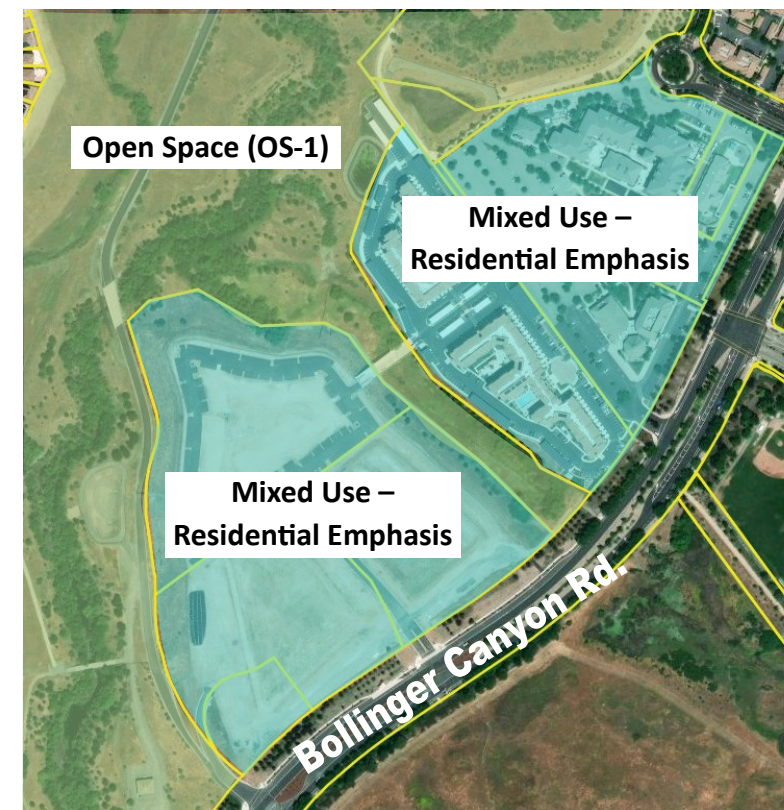
General Plan Land Use – Proposed



Zoning District – Existing (No change to DVSP)



Zoning District – Proposed (No change to DVSP)



Sherwood Park

(APN: 223-400-001)

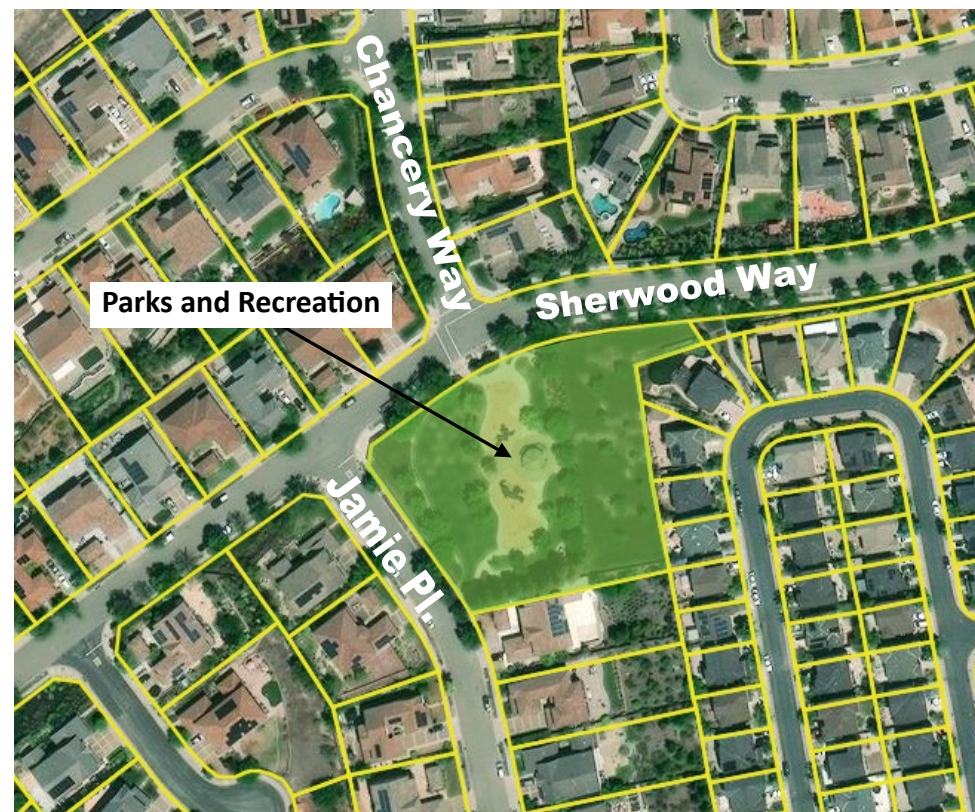
General Plan Land Use – Existing



General Plan Land Use – Proposed



Zoning District – Existing (No change to DVSP)



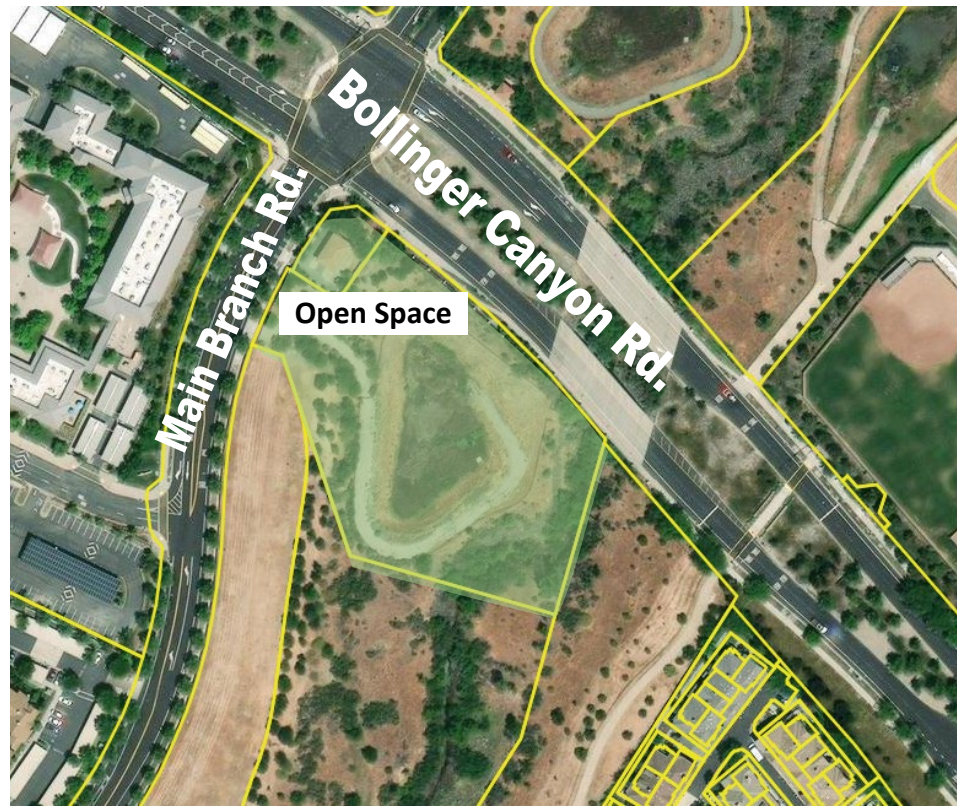
Zoning District – Proposed (No change to DVSP)



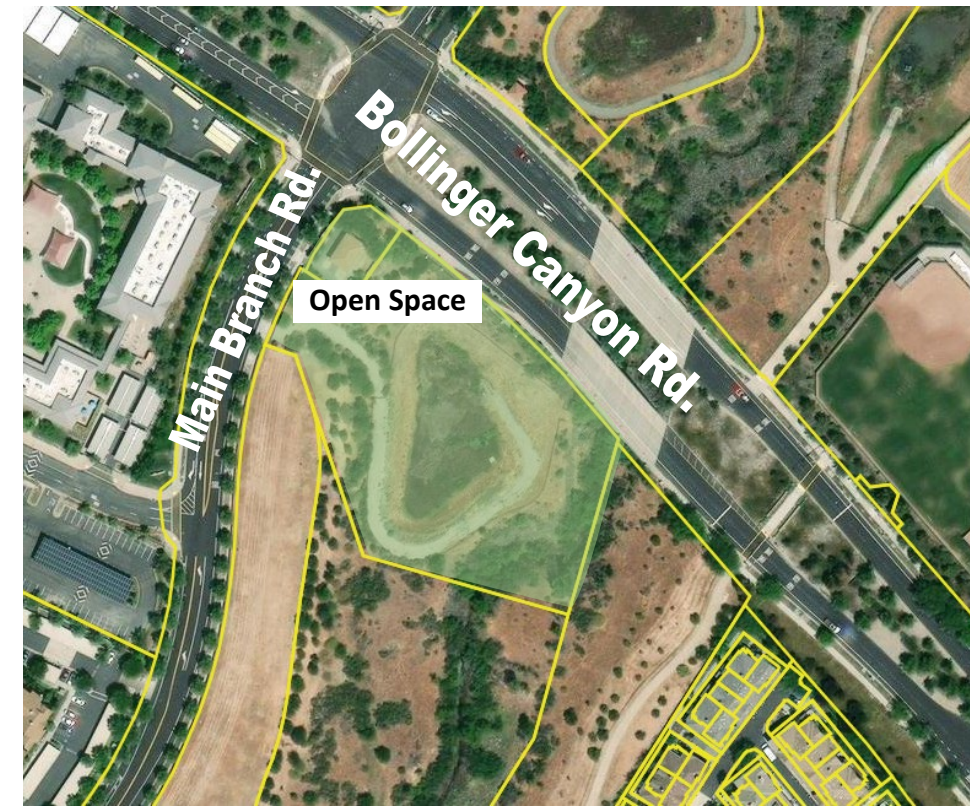
Main Branch Open Space

(APN: 222-270-017, 222-270-010)

General Plan Land Use – Existing



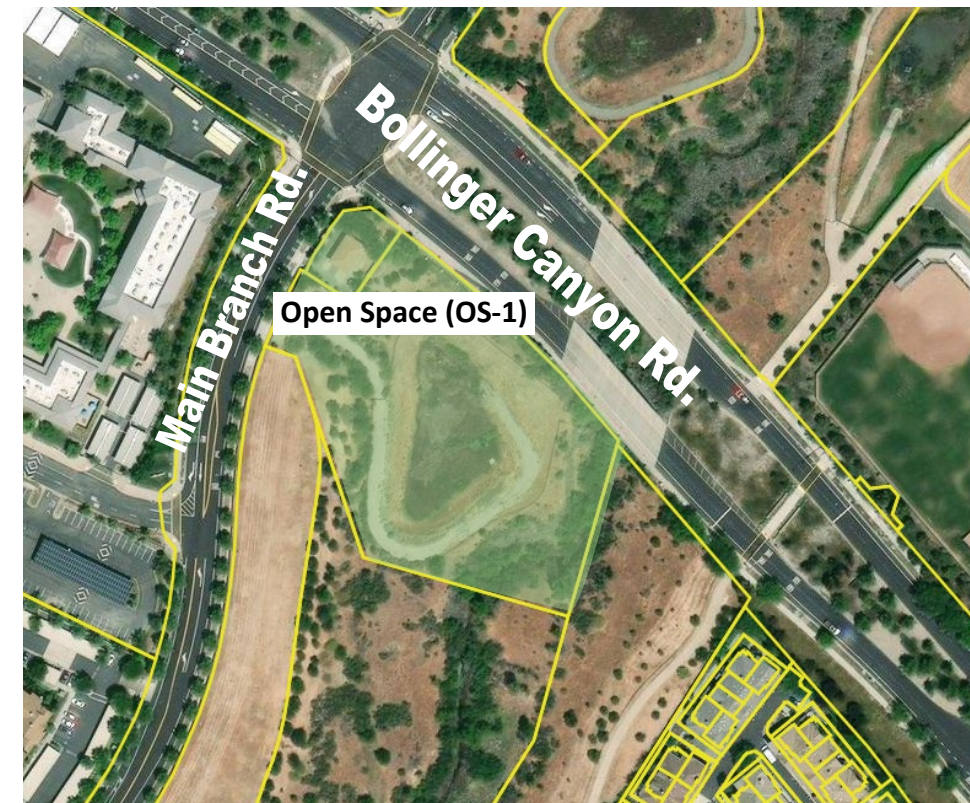
General Plan Land Use – Proposed



Zoning District – Existing (No change to DVSP)



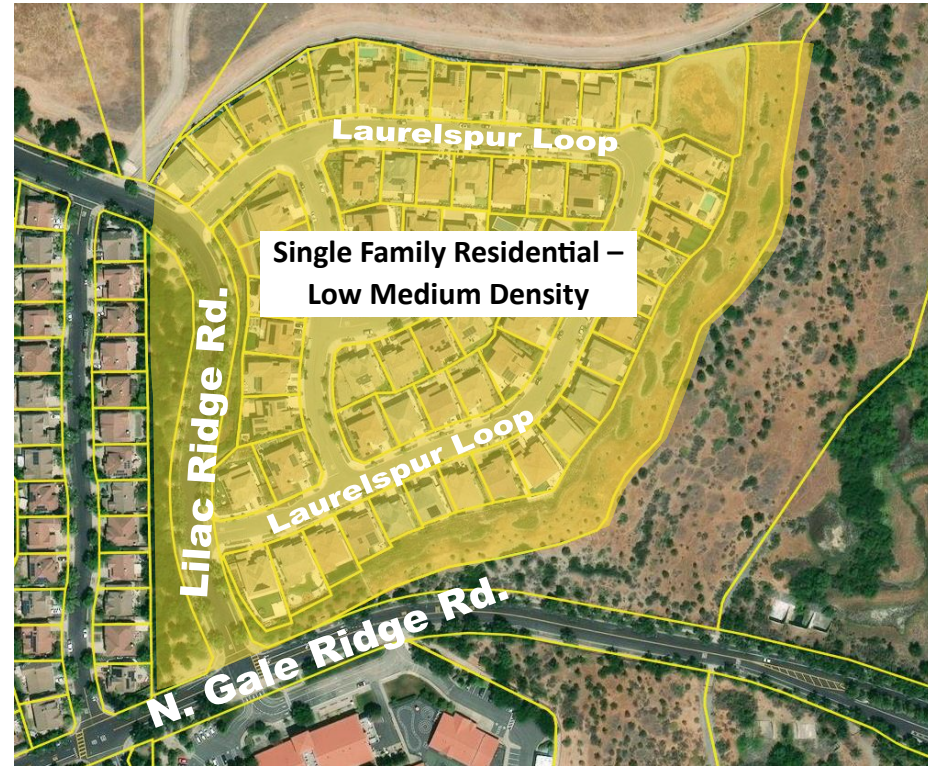
Zoning District – Proposed (No change to DVSP)



Former Coyote Creek Elementary School Site

(APNs: 222-240-030; 222-620-001; 222-620-002; 222-620-003; 222-620-004; 222-620-005; 222-620-006; 222-620-007; 222-620-008; 222-620-009; 222-620-010; 222-620-011; 222-620-012; 222-620-013; 222-620-014; 222-620-015; 222-620-016; 222-620-017; 222-620-018; 222-620-019; 222-620-020; 222-620-021; 222-620-022; 222-620-023; 222-620-024; 222-620-025; 222-620-026; 222-620-027; 222-620-028; 222-620-029; 222-620-030; 222-620-031; 222-620-032; 222-620-033; 222-620-034; 222-620-068; 222-620-069; 222-620-070; 222-620-038; 222-620-039; 222-620-040; 222-620-041; 222-620-042; 222-620-043; 222-620-044; 222-620-045; 222-620-046; 222-620-047; 222-620-048; 222-620-049; 222-620-050; 222-620-051; 222-620-052; 222-620-053; 222-620-054; 222-620-055; 222-620-056; 222-620-057; 222-620-058; 222-620-059; 222-620-060; 222-620-072; 222-620-073; 222-620-074; 222-620-065; 222-620-066; 222-620-071)

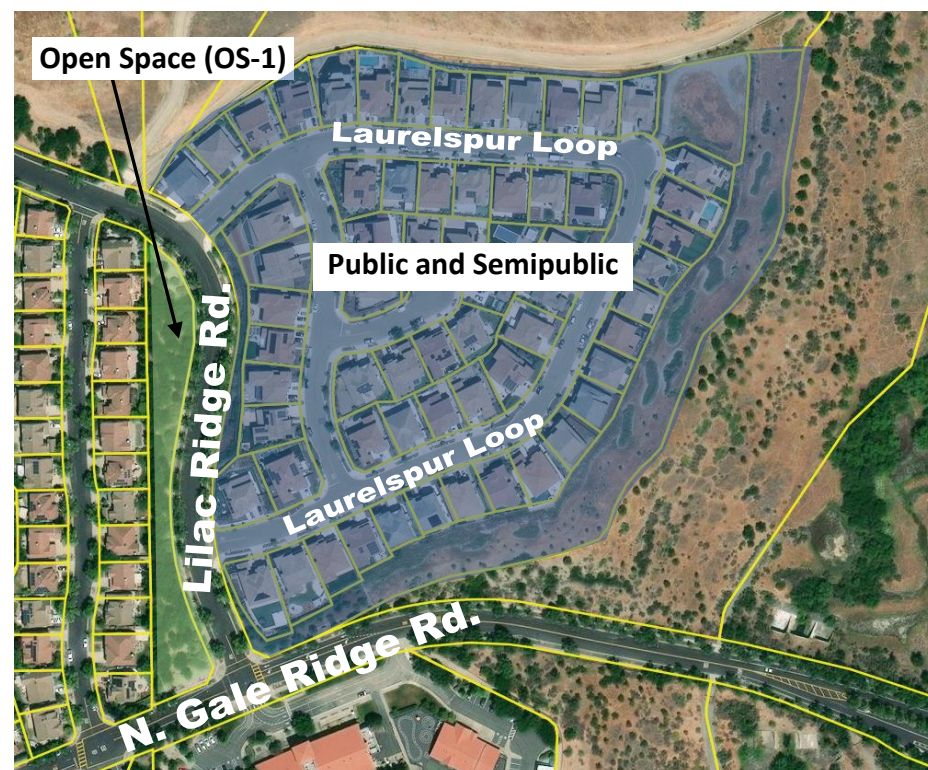
General Plan Land Use – Existing



General Plan Land Use – Proposed



Zoning District – Existing (No Change to DVSP)



Zoning District – Proposed (No Change to DVSP)



Club Sport Tennis Courts – Errata Change

(APNs: 213-621-013 and 213-621-009)

General Plan Land Use – Existing



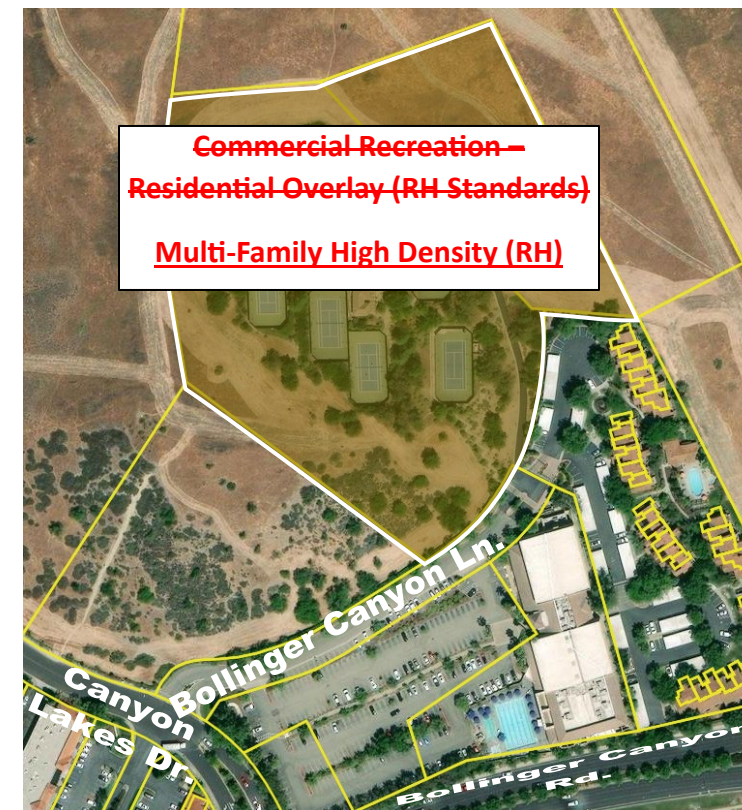
Zoning District – Existing



General Plan Land Use – Proposed



Zoning District – Proposed



Canyon View Dining Hall – Errata Change

(APNs: 213-610-032 and 213-610-033)

General Plan Land Use – Existing



General Plan Land Use – Proposed



Zoning District – Existing



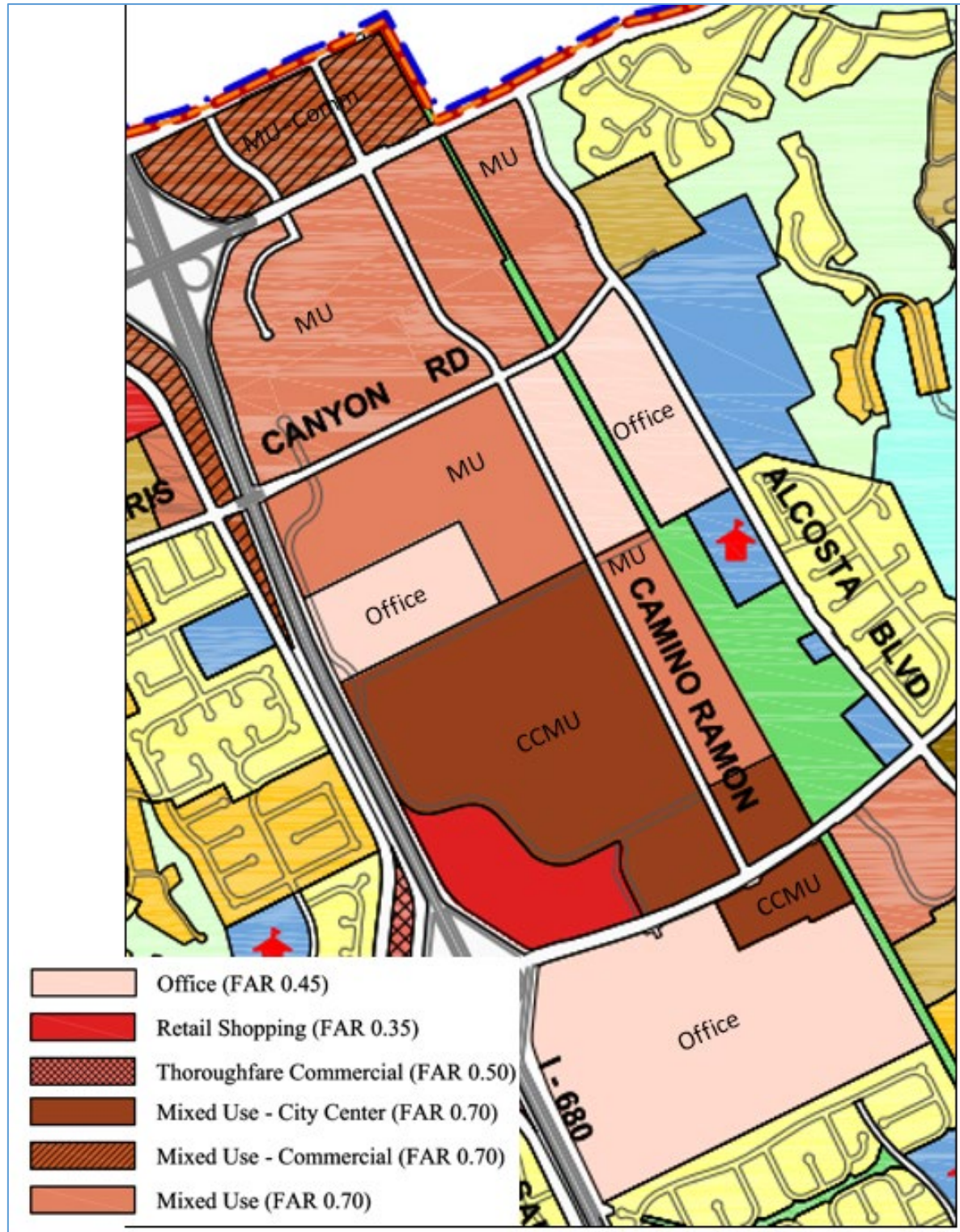
Zoning District – Proposed



City Core

(APN: 213-133-071; 213-133-080 to -085, -096, -097; 213- 010-033, -036, -037, -039, -046, -047, -052, -053, -054, -055, -057, -058, -059, -060, -064 to -070, 213-133-071 to -045, 213-020-053, -054, -056, 213-930-004, -005, -007 to -125; 213-011-002, -003, -005, -006, 218-101-004, -007, -008; 218-102-011, -013; 218-102-013; 218-111-003, -004; 218-111-020, -021; 218-112-011 to -014, 213-133-070; 213-132-005, -007, -008, -009, 213-133-053; 213-133-087; 213-133-048; 213-120-036; 213-133-099; 213-120-036; 213-020-015 to -017; 213-131-009; 213-131-003; 213-133-078; 213-133-067 to -069; 213-133-051; 213-120-008, -011, -016, -030, -032, -033, -034, -038)

General Plan Land Use – Existing



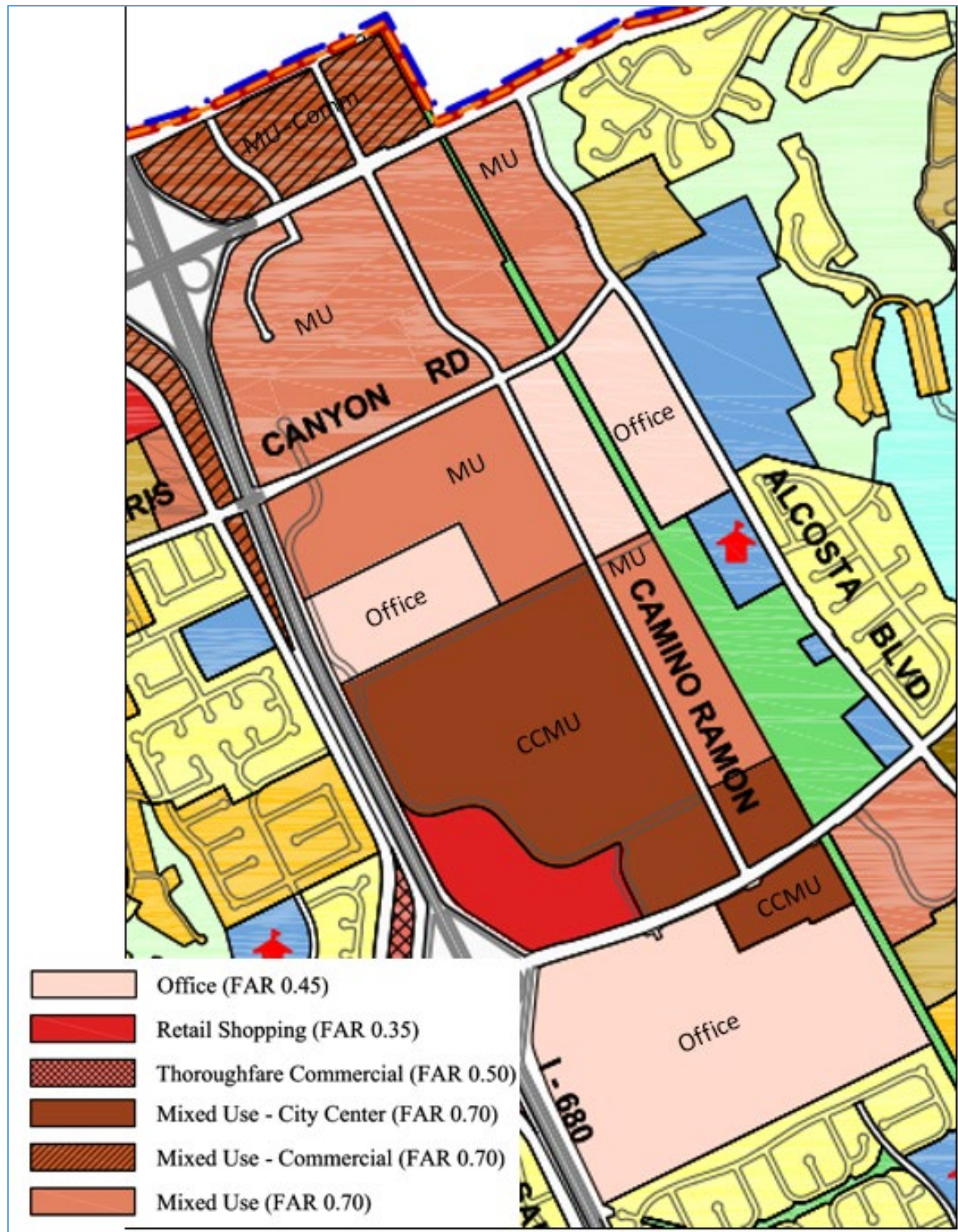
General Plan Land Use and Zoning – Proposed



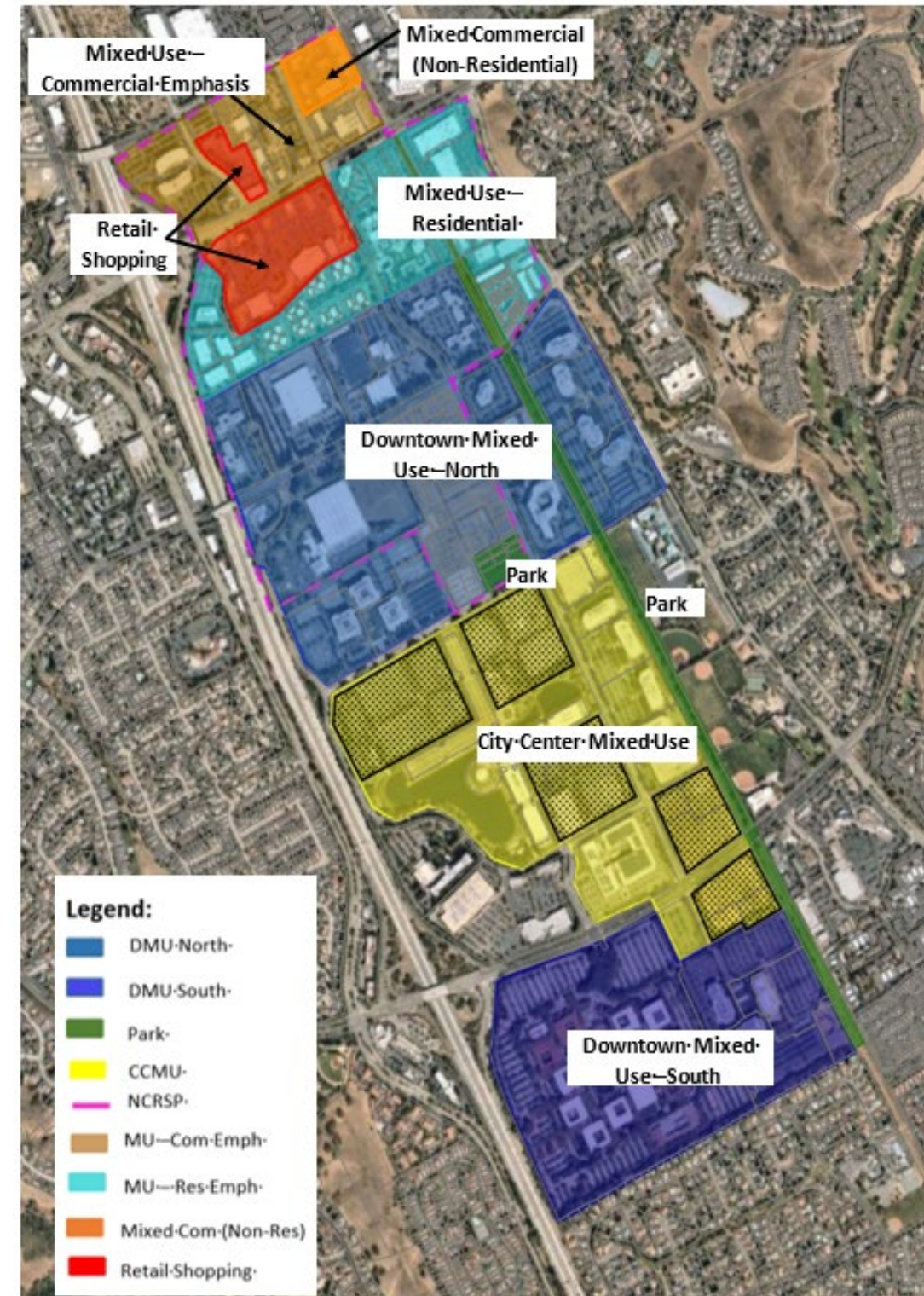
City Core (Alternative)

(APN: 213-133-071; 213-133-080 to -085, -096, -097; 213- 010-033, -036, -037, -039, -046, -047, -052, -053, -054, -055, -057, -058, -059, -060, -064 to -070, 213-133-071 to -045, 213-020-053, -054, -056, 213-930-004, -005, -007 to -125; 213-011-002, -003, -005, -006, 218-101-004, -007, -008; 218-102-011, -013; 218-102-013; 218-111-003, -004; 218-111-020, -021; 218-112-011 to -014, 213-133-070; 213-132-005, -007, -008, -009, 213-133-053; 213-133-087; 213-133-048; 213-120-036; 213-133-099; 213-120-036; 213-020-015 to -017; 213-131-009; 213-131-003; 213-133-078; 213-133-067 to -069; 213-133-051; 213-120-008, -011, -016, -030, -032, -033, -034, -038)

General Plan Land Use – Existing



General Plan Land Use and Zoning District – Proposed



Marketplace

(APNs: 213-701-002; 213-701-003; 213-701-004; 213-702-002; 213-702-003; 213-702-004; 213-702-006; 213-702-007; 213-702-008)

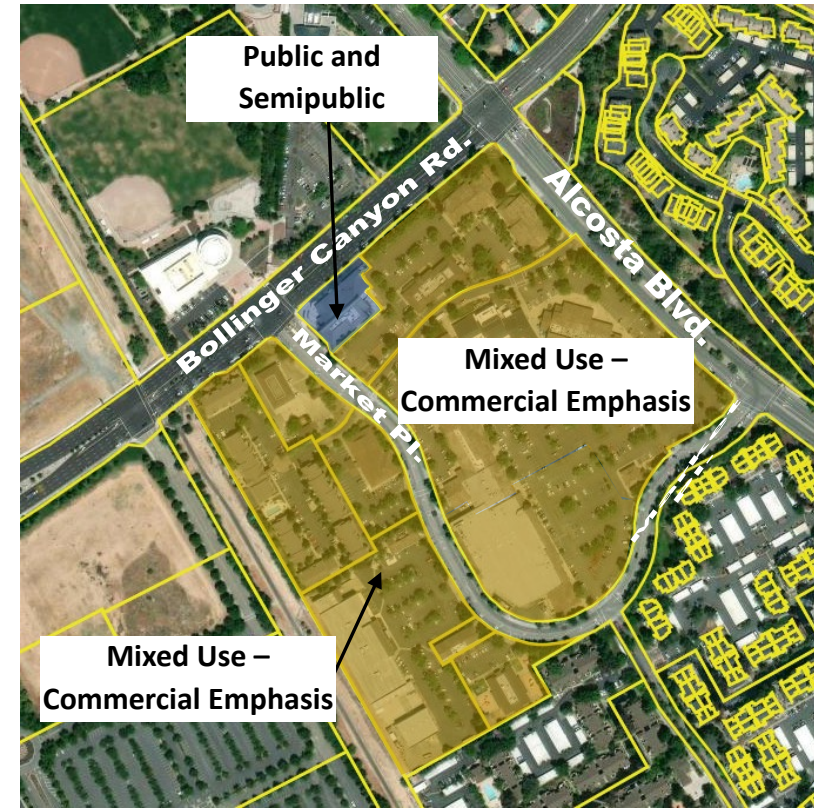
General Plan Land Use – Existing



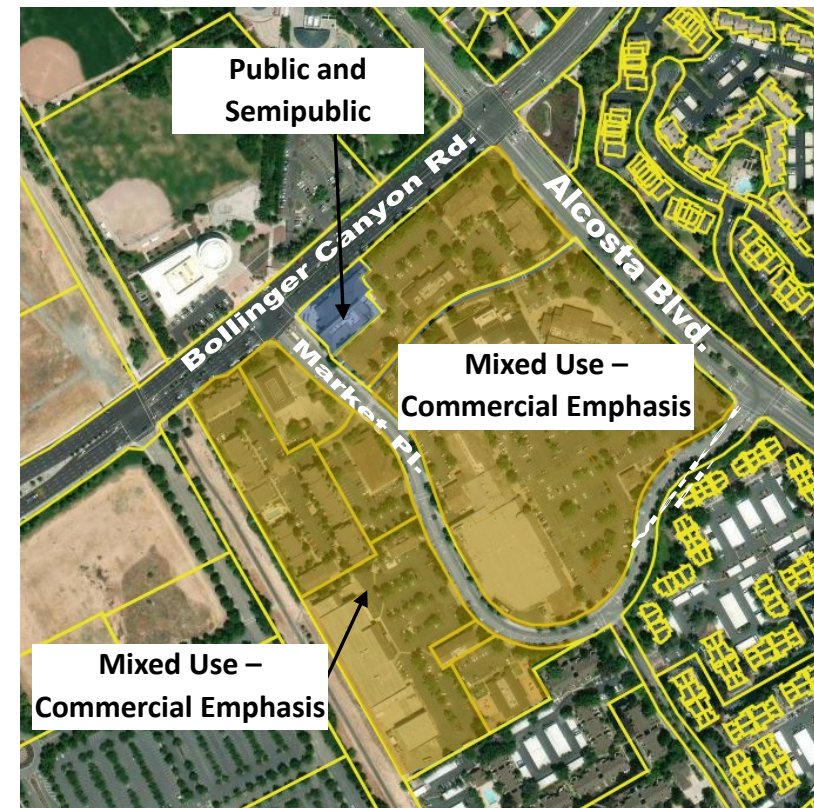
Zoning District – Existing



General Plan Land Use – Proposed



Zoning District – Proposed



Marketplace - Alternative

(APNs: 213-701-002; 213-701-003; 213-701-004; 213-702-002; 213-702-003; 213-702-004; 213-702-006; 213-702-007; 213-702-008)

General Plan Land Use – Existing



General Plan Land Use – Proposed



Zoning District – Existing



Zoning District – Proposed



Alcosta Professional Center (9260 Alcosta Blvd.)

(APNs: 210-260-054; 210-260-055; 210-260-056; 210-260-057; 210-260-058)

General Plan Land Use – Existing



General Plan Land Use – Proposed



Zoning District – Existing



Zoning District – Proposed



Church of the Valley (19001 San Ramon Valley Blvd.) – Errata Change

(APN: 211-051-014)

General Plan Land Use – Existing



General Plan Land Use – Proposed



Zoning District – Existing



Zoning District – Proposed



Country Club Village (9100 – 9150 Alcosta Blvd.)

(APNs: 210-520-051; 210-520-052; 210-520-053; 210-520-054; 210-520-055; 210-520-056)

General Plan Land Use – Existing



General Plan Land Use – Proposed



Zoning District – Existing



Zoning District – Proposed



Country Club Village (9100 – 9150 Alcosta Blvd.) - Alternative

(APNs: 210-520-051; 210-520-052; 210-520-053; 210-520-054; 210-520-055; 210-520-056)

General Plan Land Use – Existing



General Plan Land Use – Proposed



Zoning District – Existing



Zoning District – Proposed



Erik's Deli (2525 – 2551 San Ramon Valley Blvd.)

(APNs: 209-030-093 and 203-030-096)

General Plan Land Use – Existing



General Plan Land Use – Proposed



Zoning District – Existing



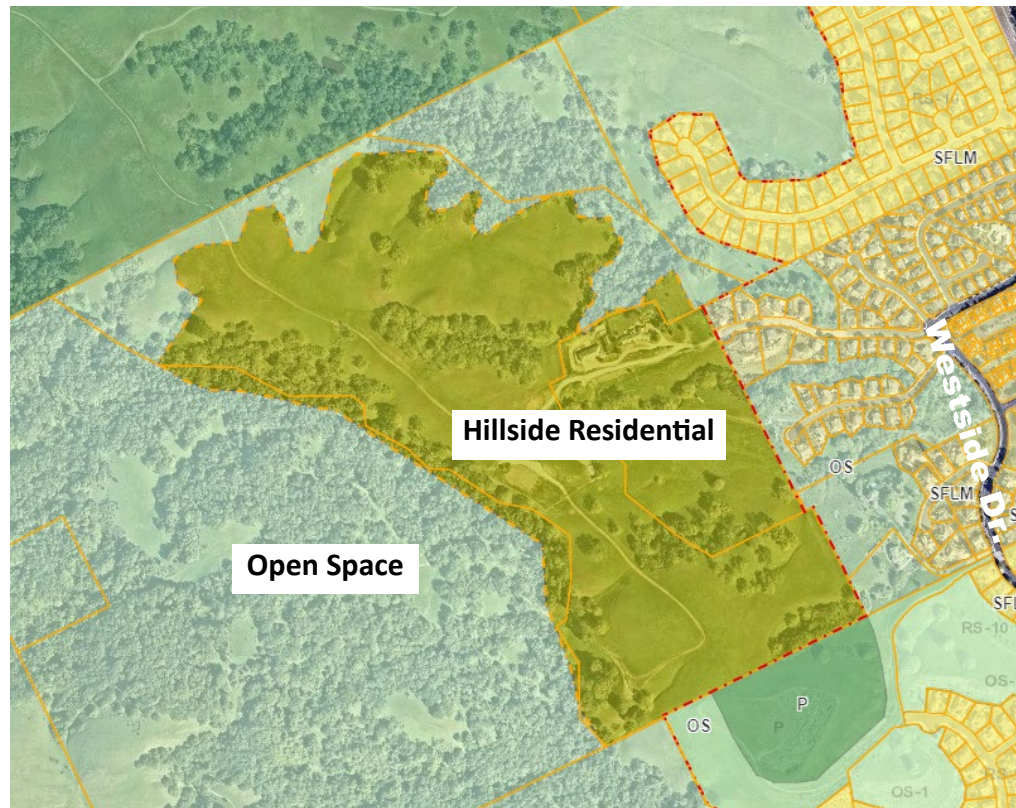
Zoning District – Proposed



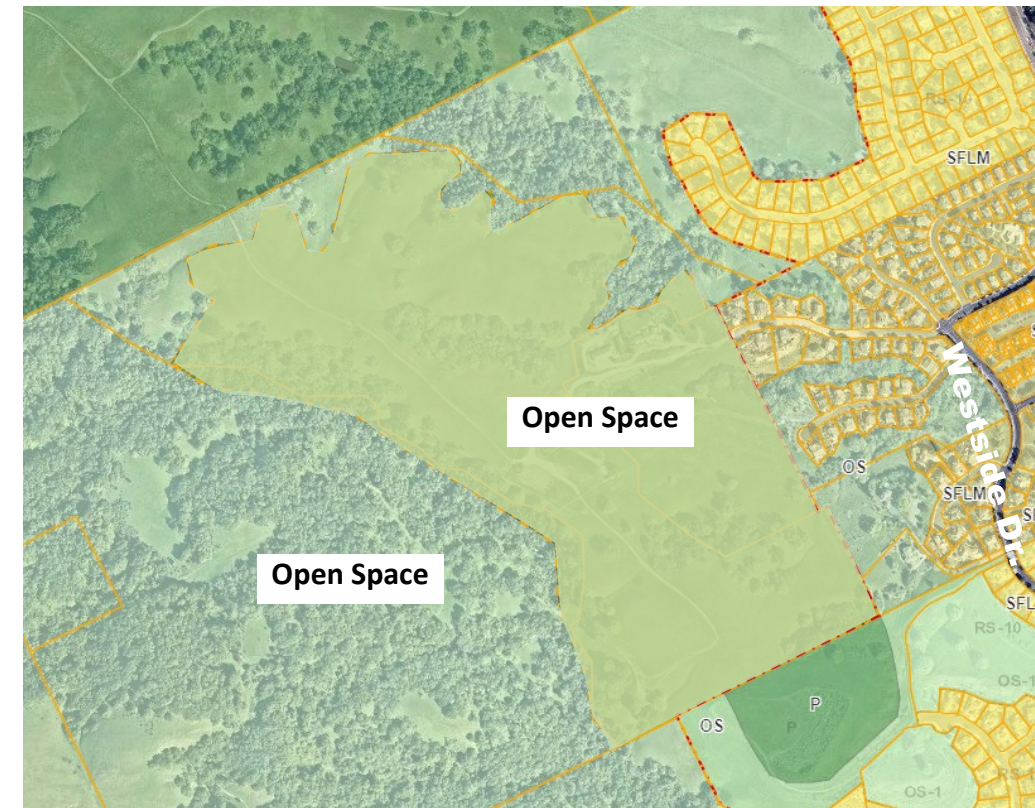
Geldermann Properties

(APNs: 211-010-042; 210-010-043; 210-010-035)

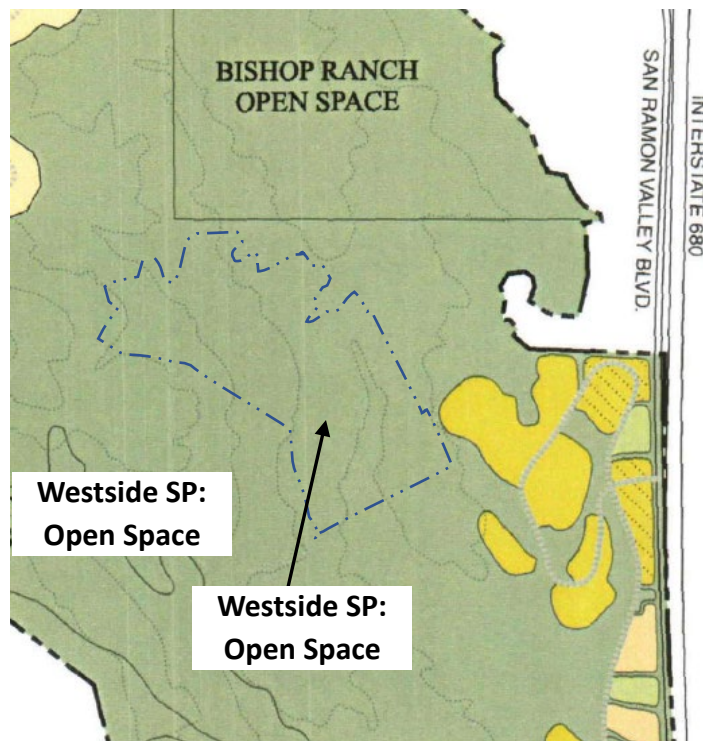
General Plan Land Use – Existing



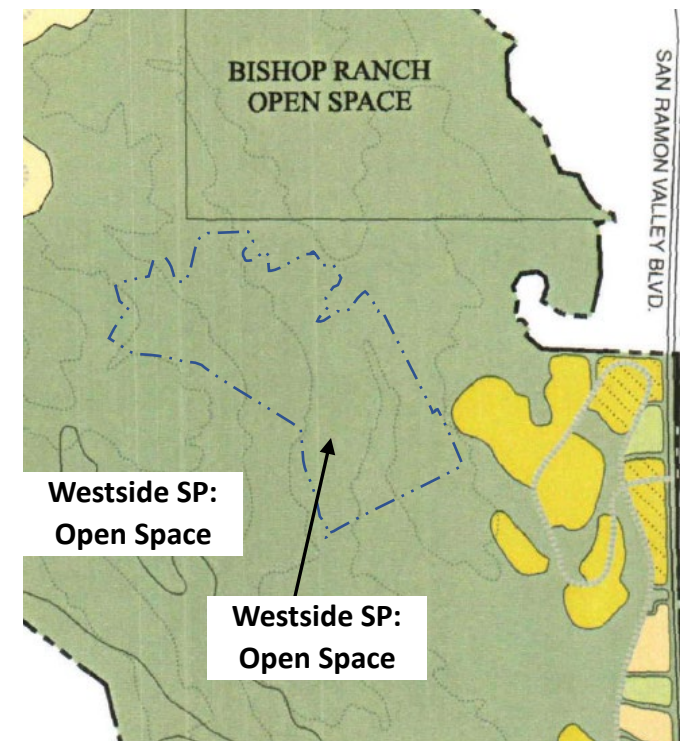
General Plan Land Use – Proposed



Westside Specific Plan Zoning District – Existing



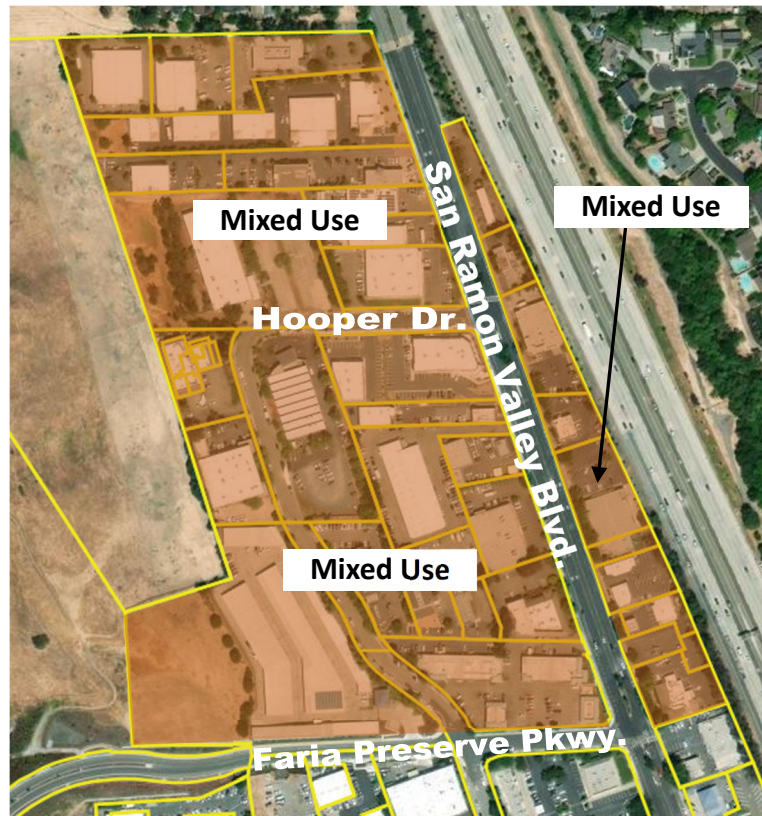
Westside Specific Plan Zoning District – Proposed



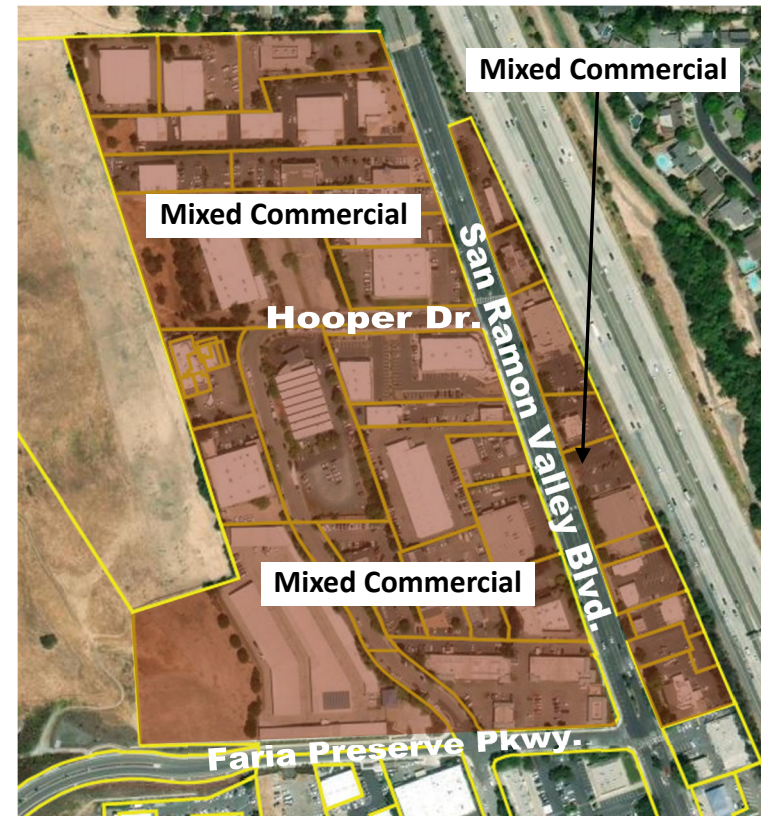
San Ramon Village Specific Plan (SRVSP) – North – Errata Change

(APNs: 208-250-060; 208-250-061; 208-250-062; 208-250-086; 208-250-088; 208-250-087; 208-250-091; 208-250-053; 208-250-052; 208-250-050; 208-660-007; 208-660-006; 208-660-005; 208-660-004; 208-660-003; 208-660-002; 208-660-001; 208-250-058; 208-250-090; 208-250-075; 208-250-081; 208-250-080; 208-250-073; 208-250-047; 208-260-057; 208-250-084; 208-250-083; 208-250-071; 208-250-072; 208-250-085; 208-260-050)

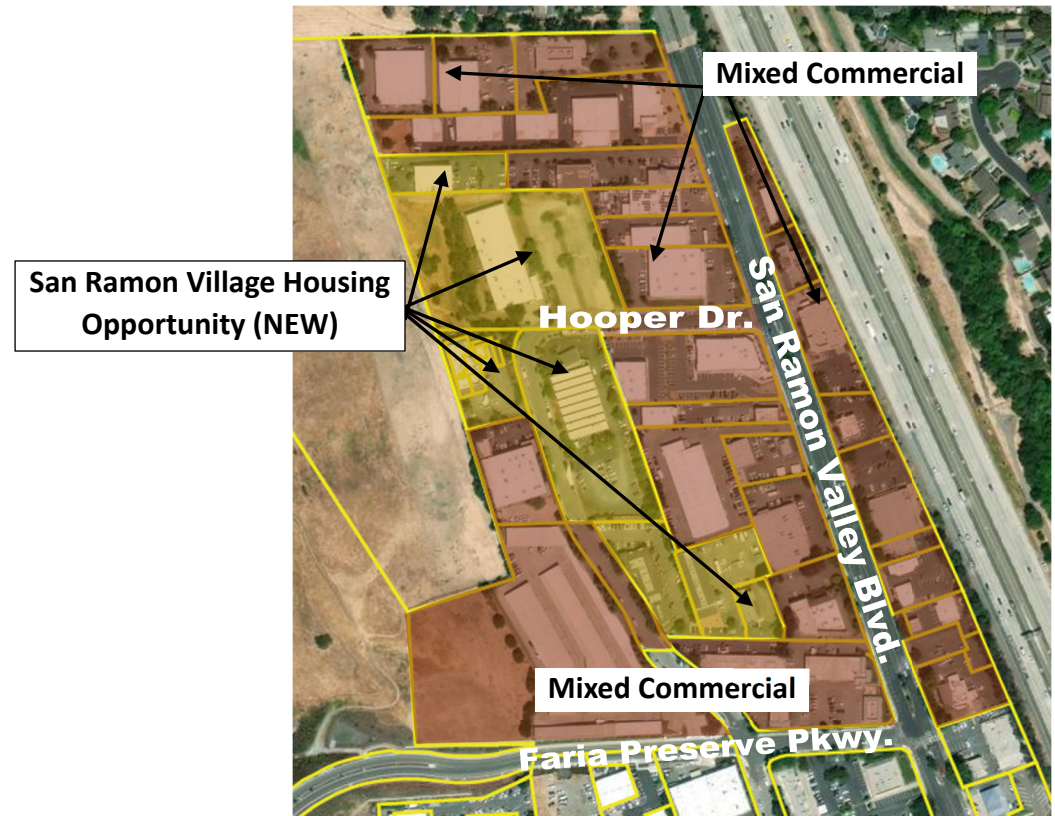
General Plan Land Use – Existing



General Plan Land Use – Proposed (May 30, 2023)



General Plan Land Use – Proposed Errata Change



SRVSP Zoning District – Existing



SRVSP Zoning District – Proposed (May 30, 2023)



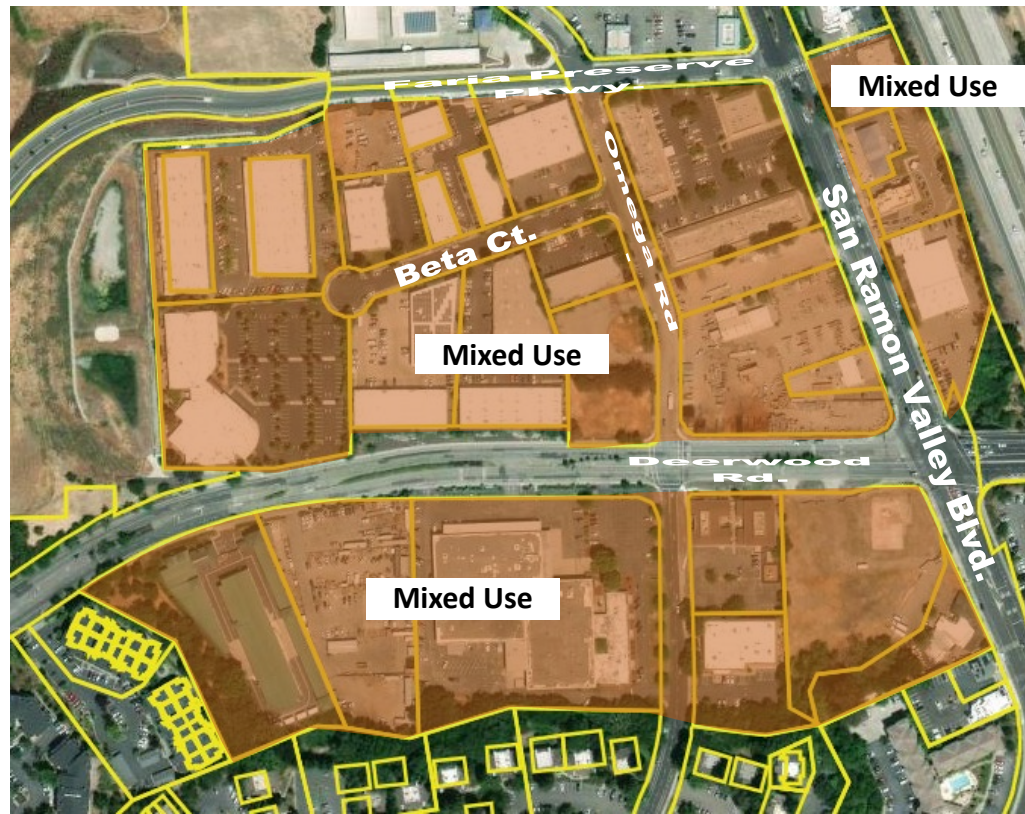
SRVSP Zoning District – Proposed Errata Change



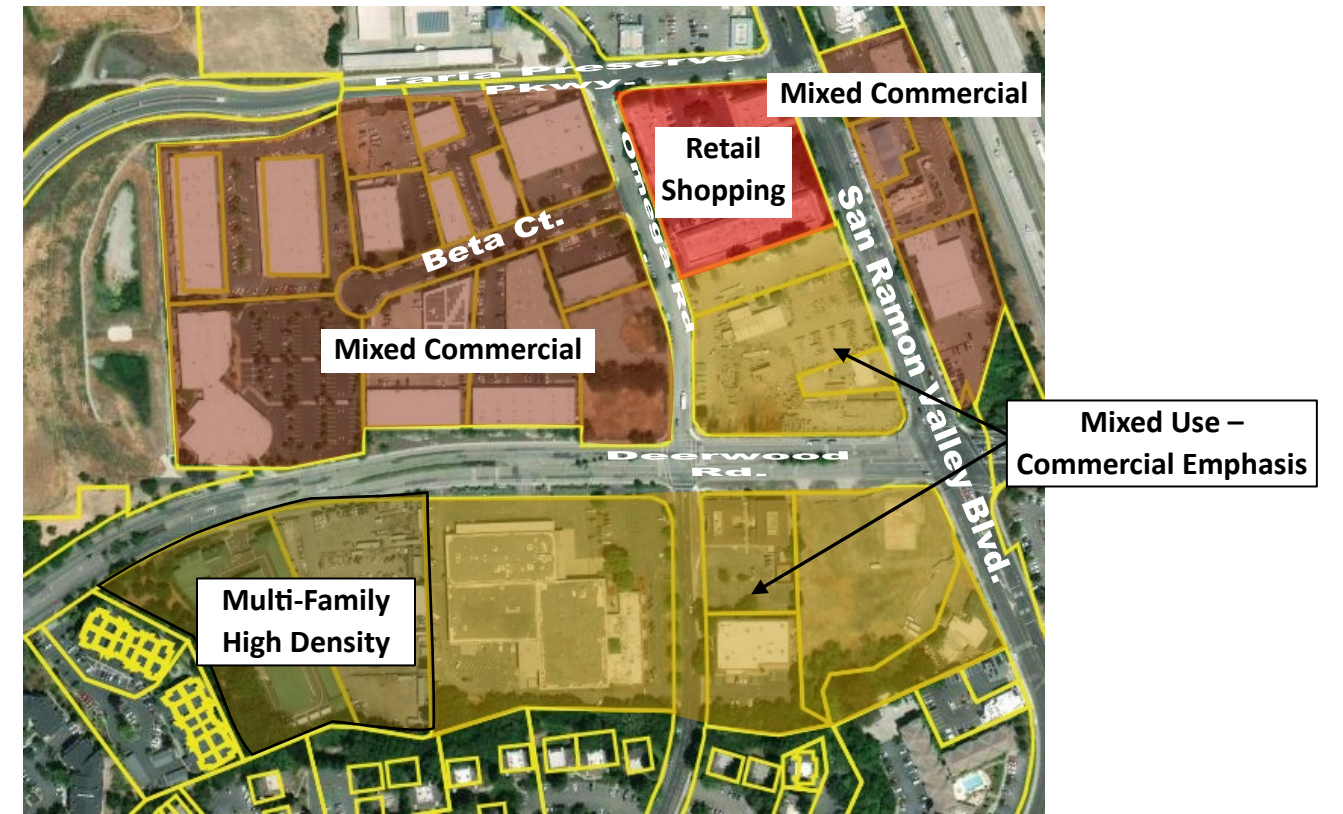
San Ramon Village Specific Plan (SRVSP) - Central

(APNs: 208-451-014; 208-451-015; 208-451-016; 208-451-018; 208-451-017; 208-451-012; 208-451-020; 208-451-021; 208-451-022; 208-451-023; 208-451-019; 208-451-005; -208-451-004; 208-451-003; 208-451-024; 208-452-005; 208-260-036; 208-260-052; 208-260-053; 218-080-029; 218-080-011; 218-080-034; 218-080-028; 208-260-037; 208-260-054; 208-260-056; 208-271-022; 208-271-021; 208-271-041; 208-271-003)

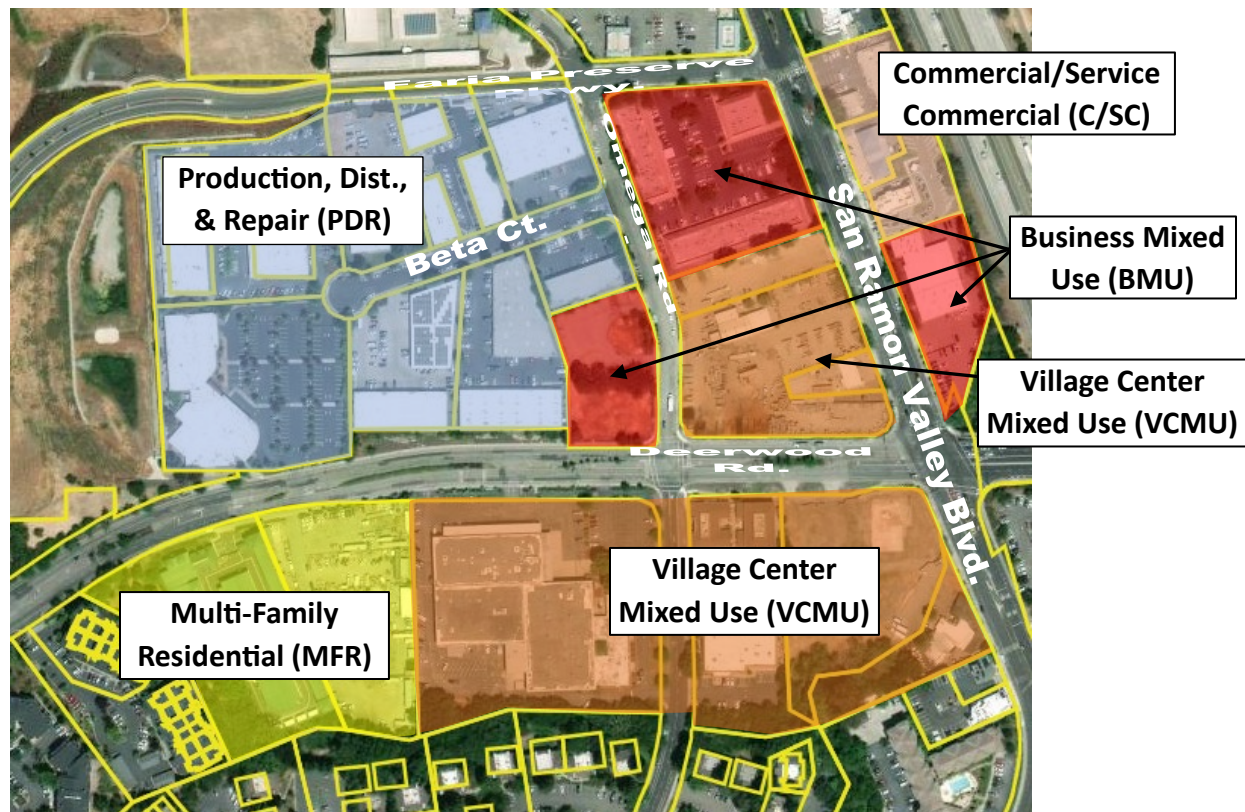
General Plan Land Use – Existing



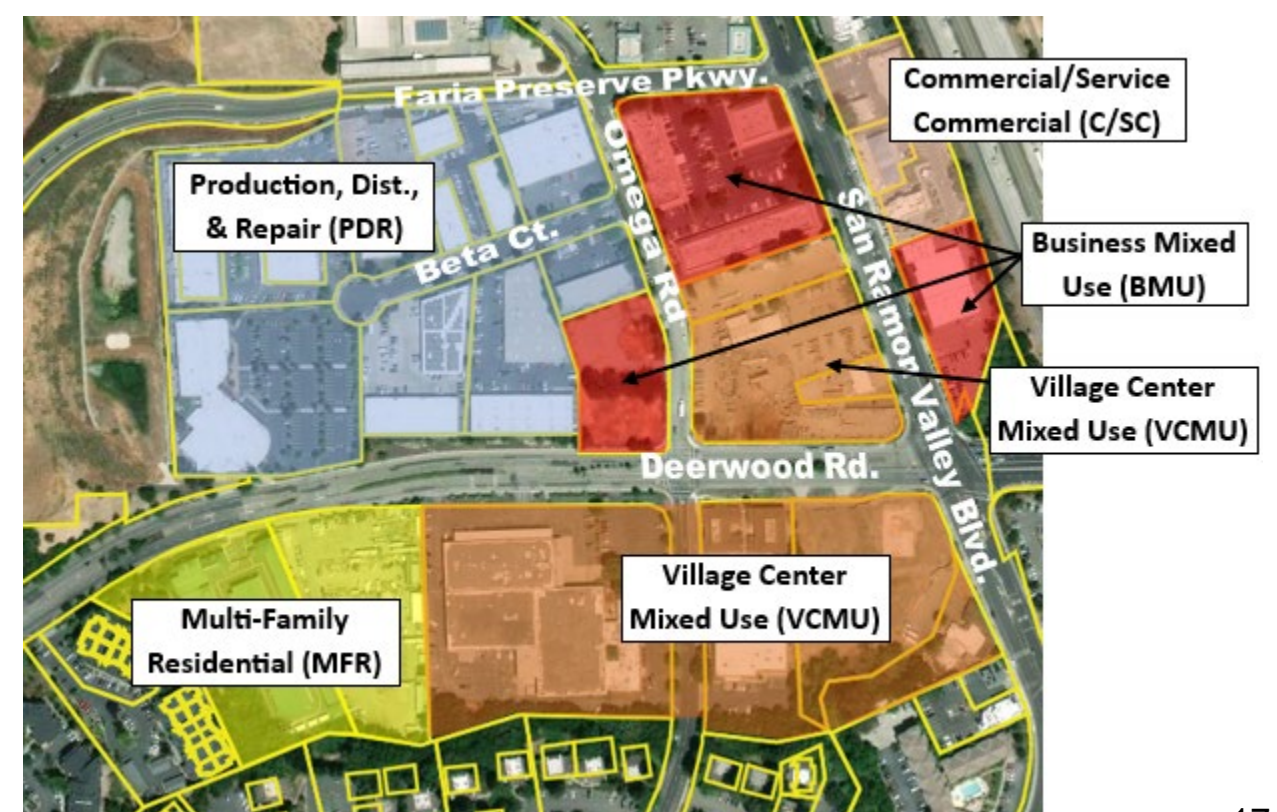
General Plan Land Use – Proposed



SRVSP Zoning District – Existing



SRVSP Zoning District – Proposed



San Ramon Village Specific Plan (SRVSP) - South

(APNs: 218-080-033; 208-272-016; 208-272-011; 208-271-025; 208-271-042; 208-271-029; 208-271-031; 208-290-006; 208-290-011; 208-272-012; 208-290-031; 208-290-032; 208-290-015; 208-290-023; 208-290-027; 208-290-028; 208-271-024; 208-490-010; 208-280-009; 208-280-014; 208-280-015; 208-280-016; 208-271-037; 208-271-038; 208-271-039; 208-271-040; 208-271-032; 208-271-033; 208-271-035; 208-271-036; 208-490-011; 208-490-012; 208-490-013; 208-490-014; 208-490-015; 208-490-016; 208-490-017; 208-490-018; 208-490-019; 208-490-020; 208-490-021; 208-490-022; 208-490-023; 208-490-024; 208-490-025; 208-490-026; 208-490-027; 208-490-028; 208-490-029; 208-490-030)

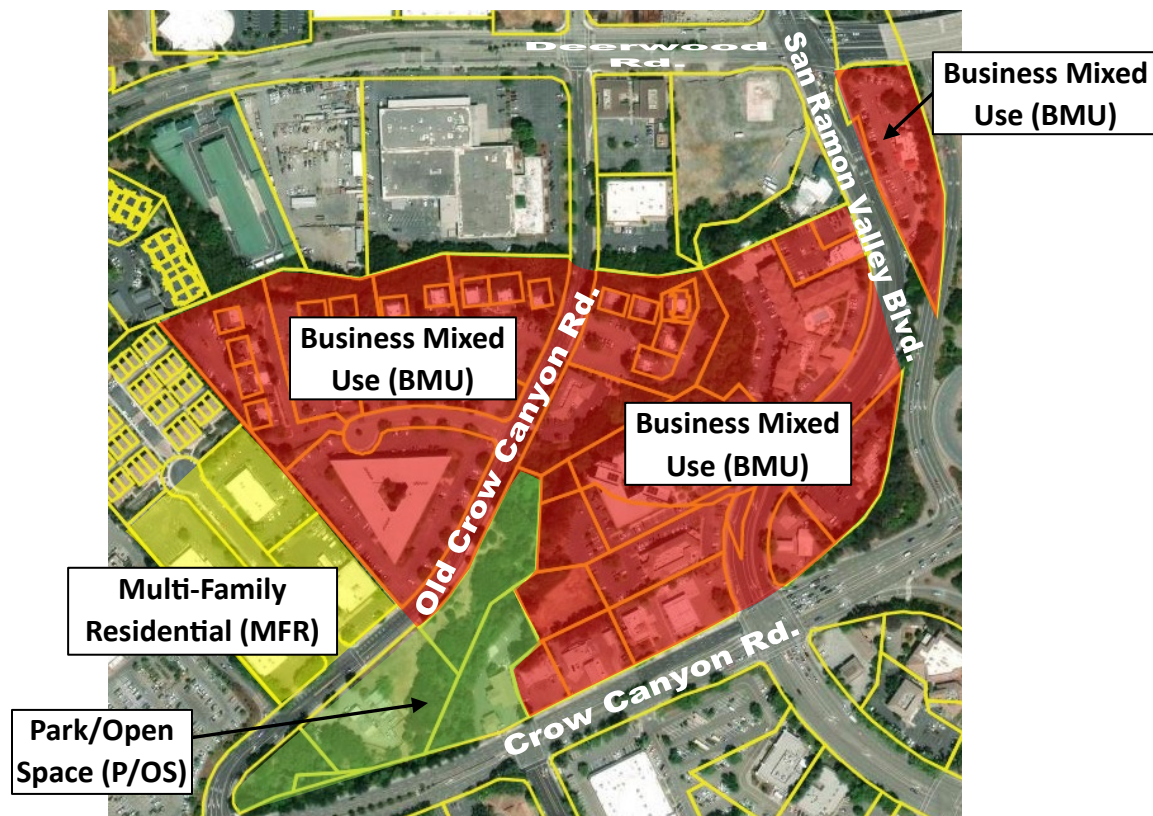
General Plan Land Use – Existing



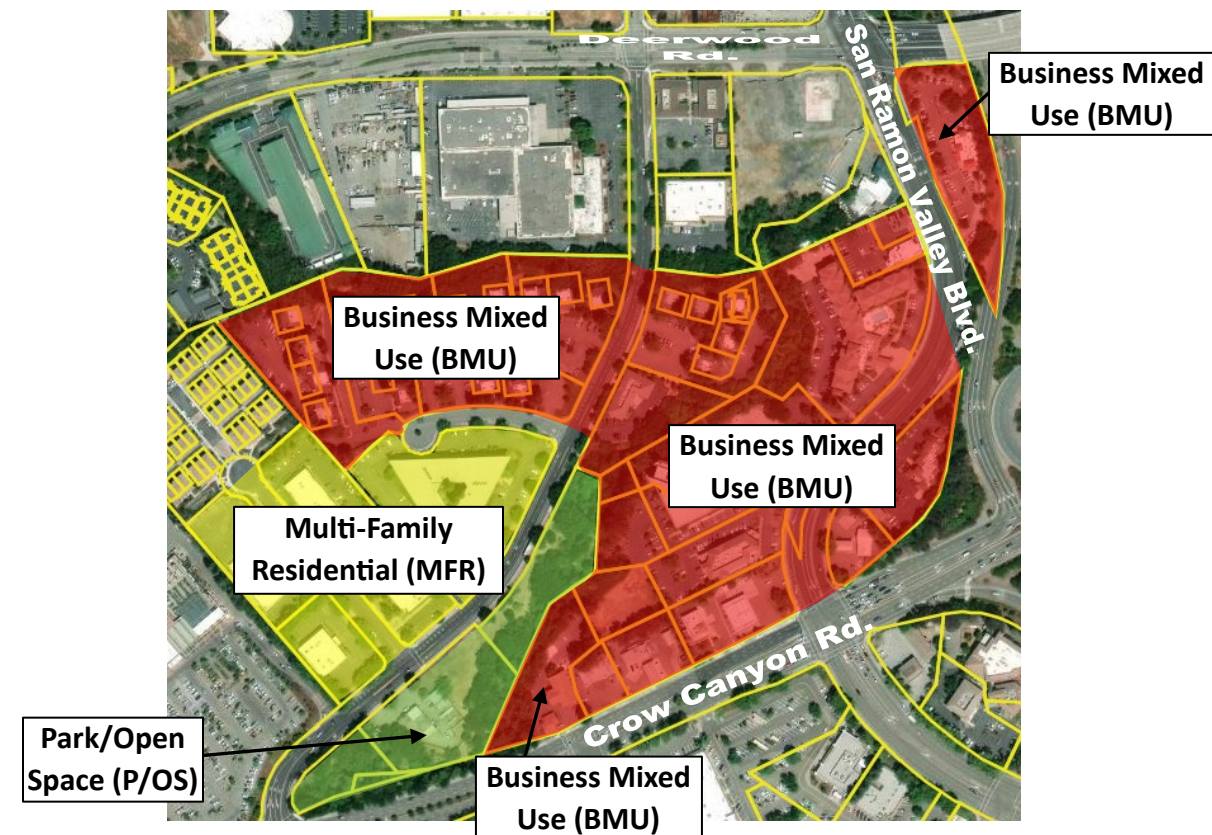
General Plan Land Use – Proposed



SRVSP Zoning District – Existing



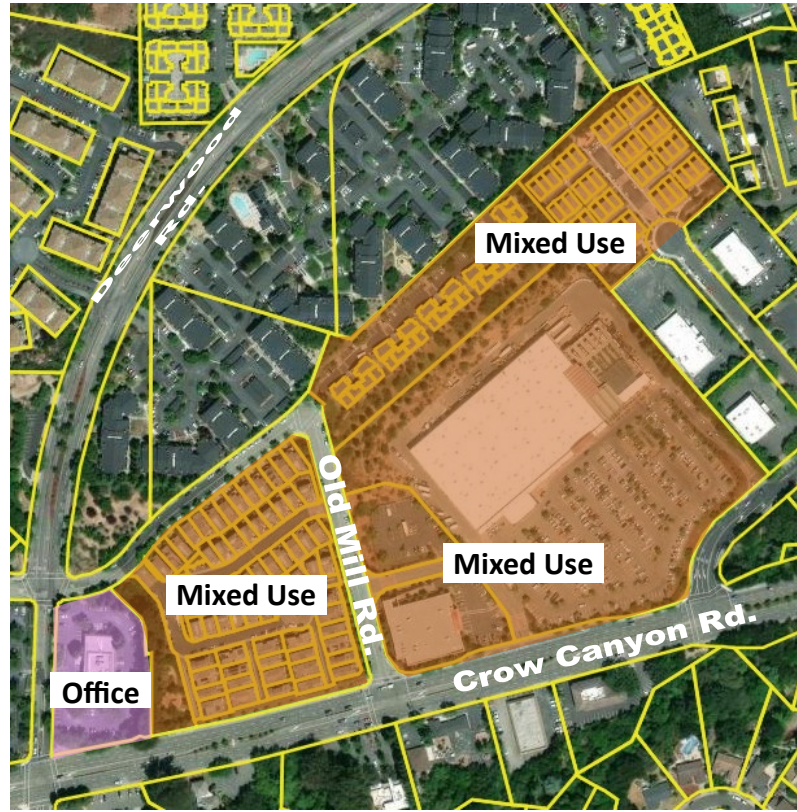
SRVSP Zoning District – Proposed



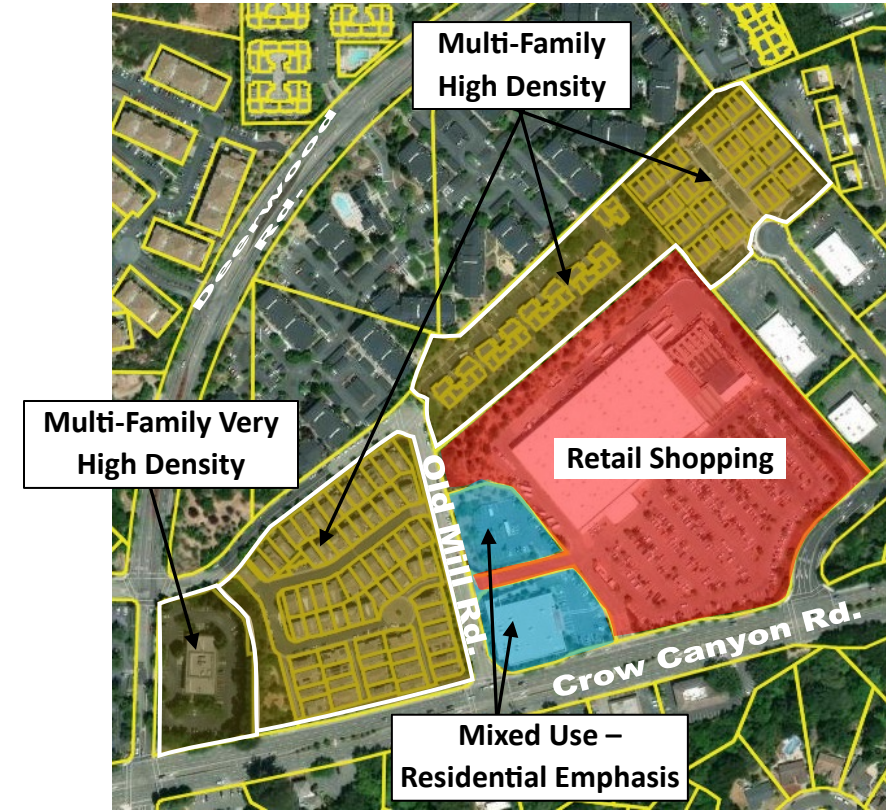
Home Depot Area

(APNs: 208-800-001 through 208-800-049; 208-720-001 through 208-720-037; 208-740-001 through 208-740-073; 208-280-027; 208-280-034; 208-280-033; 208-280-032)

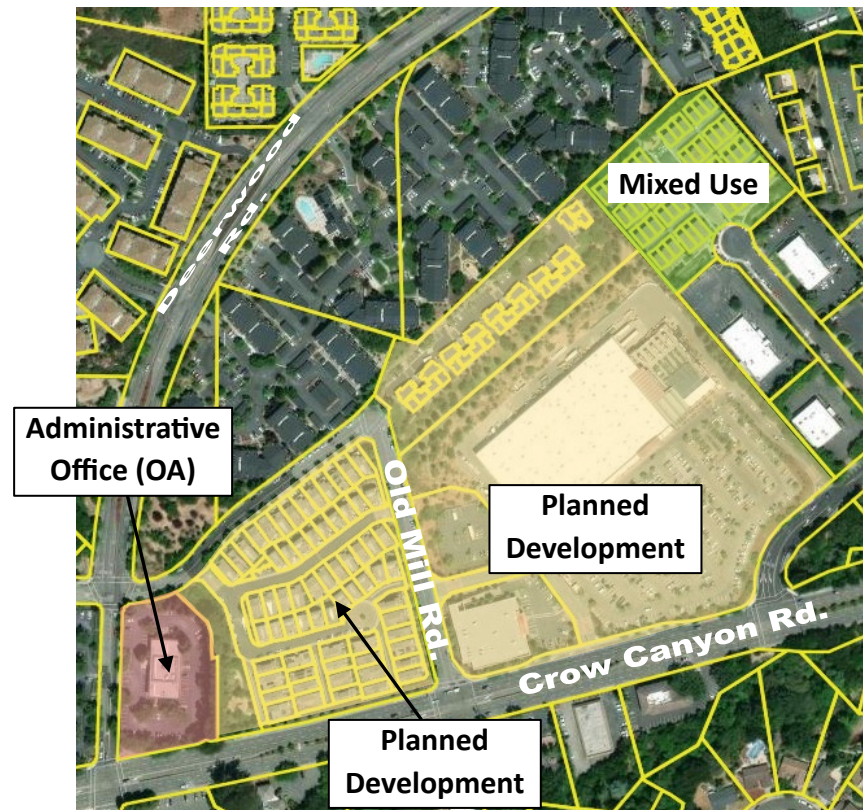
General Plan Land Use – Existing



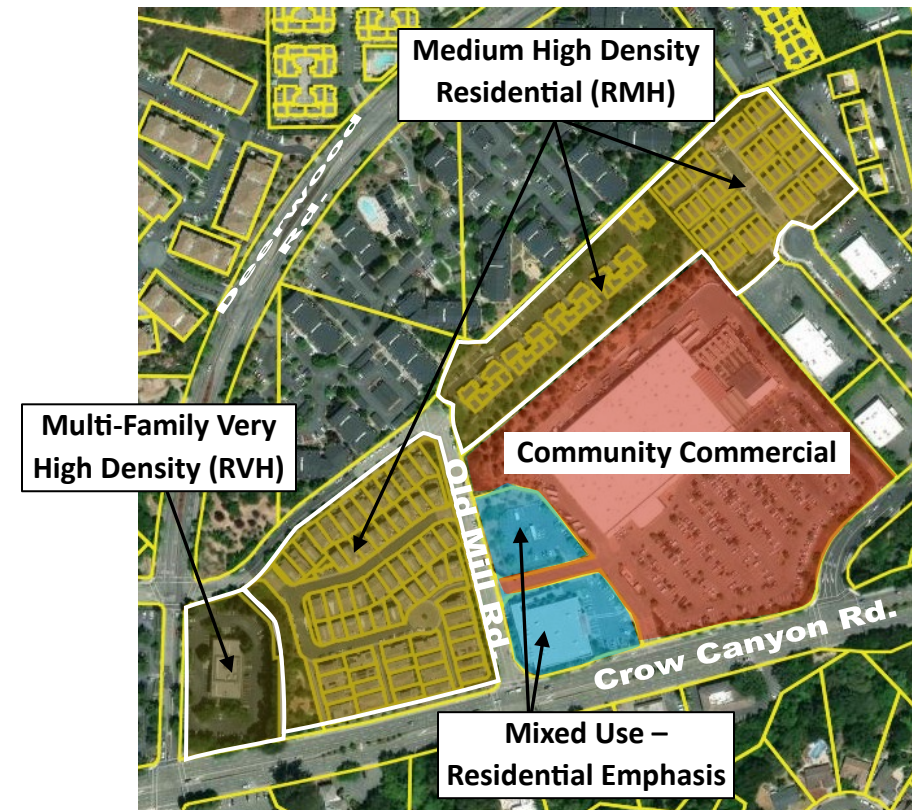
General Plan Land Use – Proposed



Zoning District – Existing



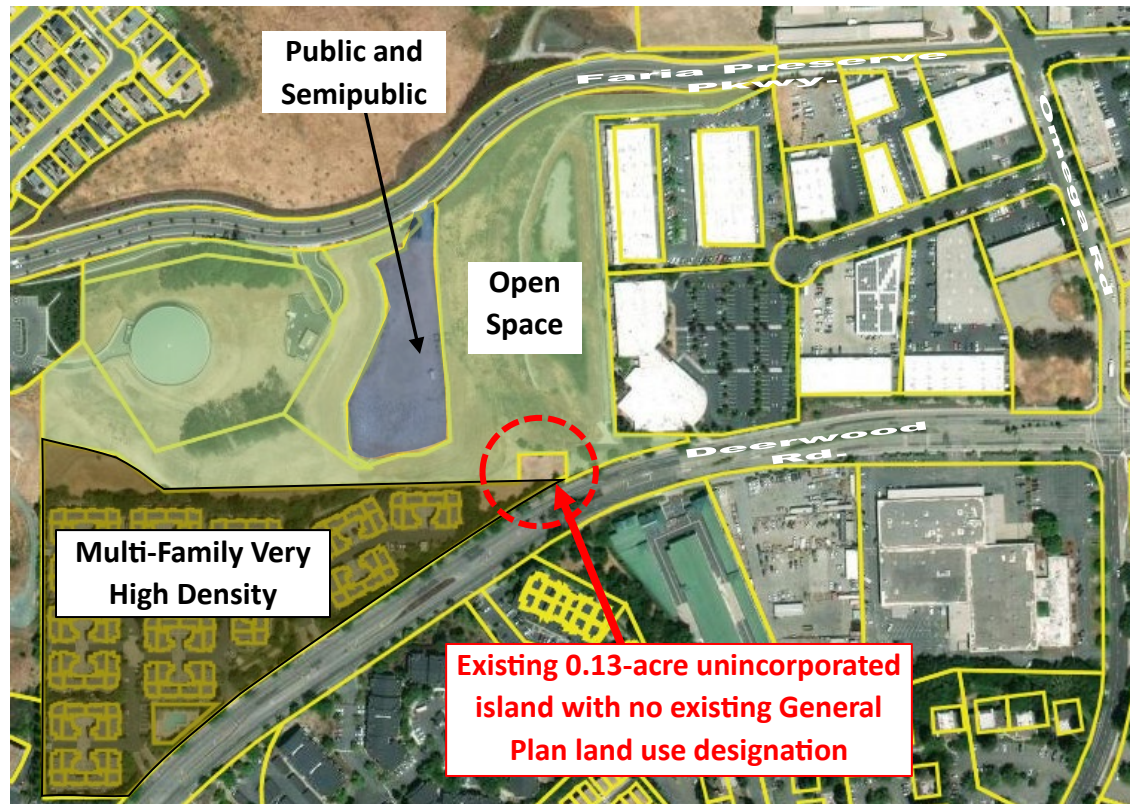
Zoning District – Proposed



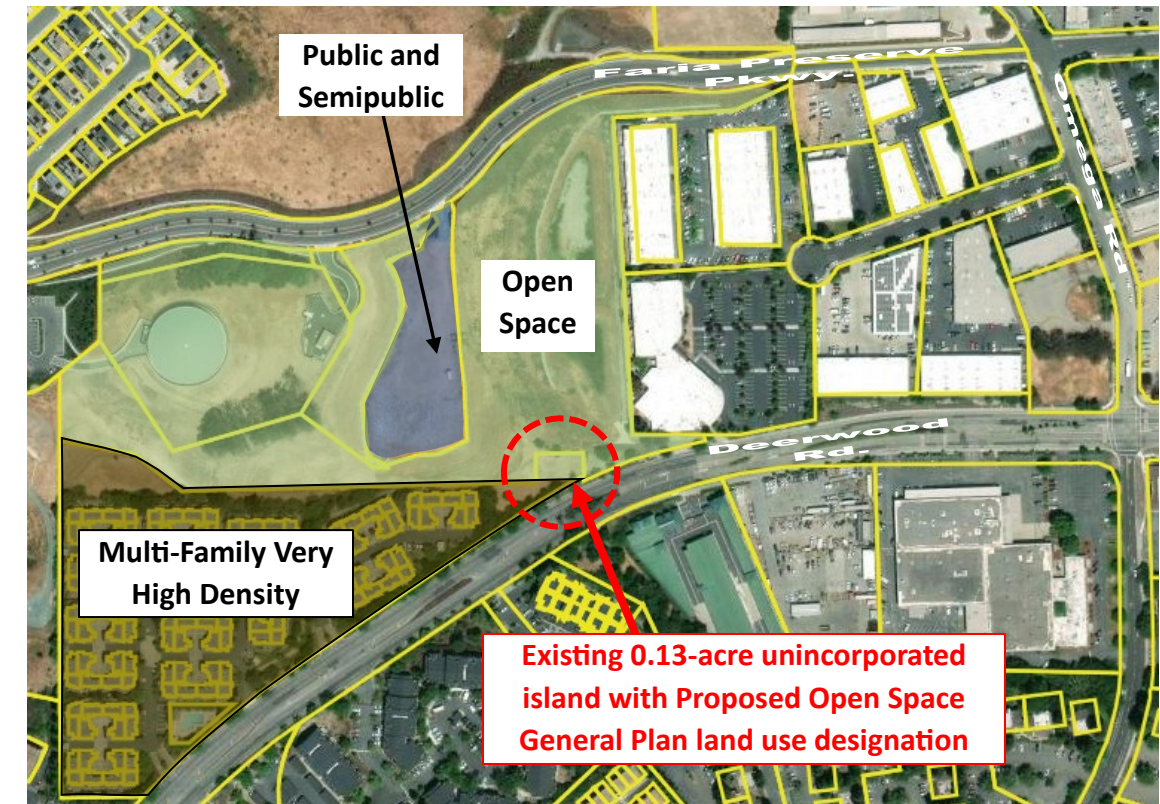
Deerwood Unincorporated Island

(APN: 208-700-082)

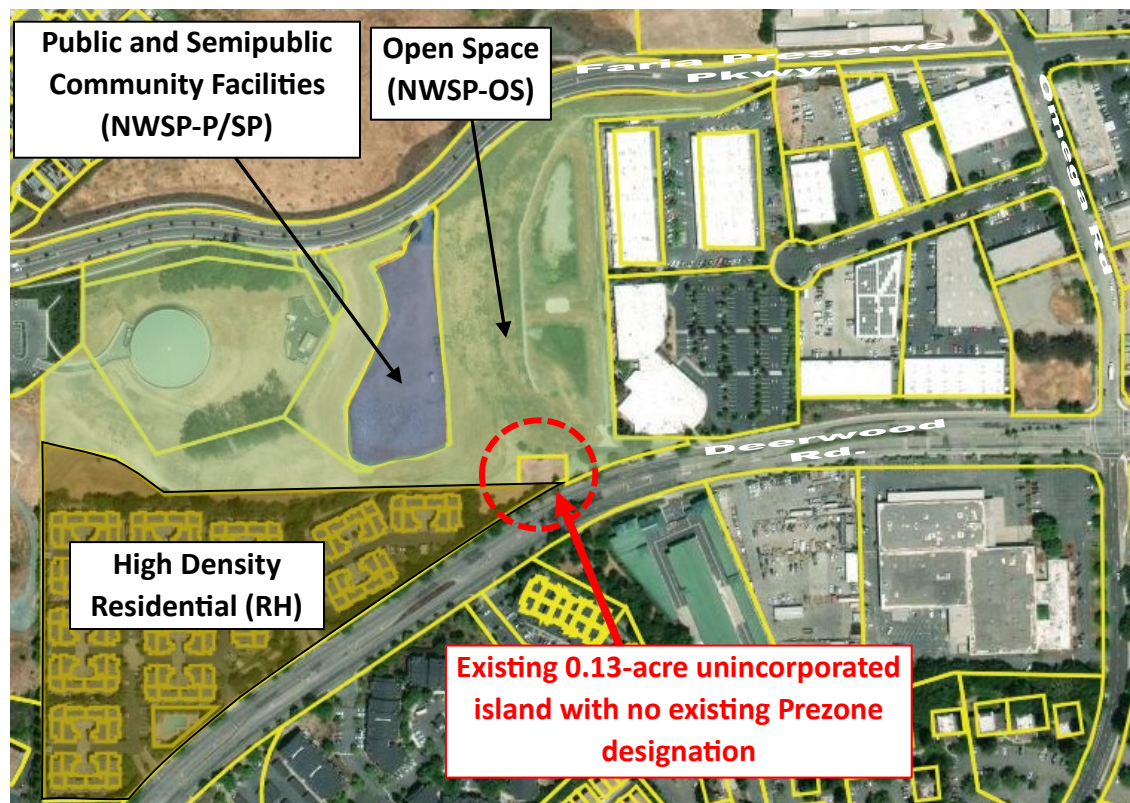
General Plan Land Use – Existing



General Plan Land Use – Proposed



Zoning District – Existing



Zoning District – Proposed

